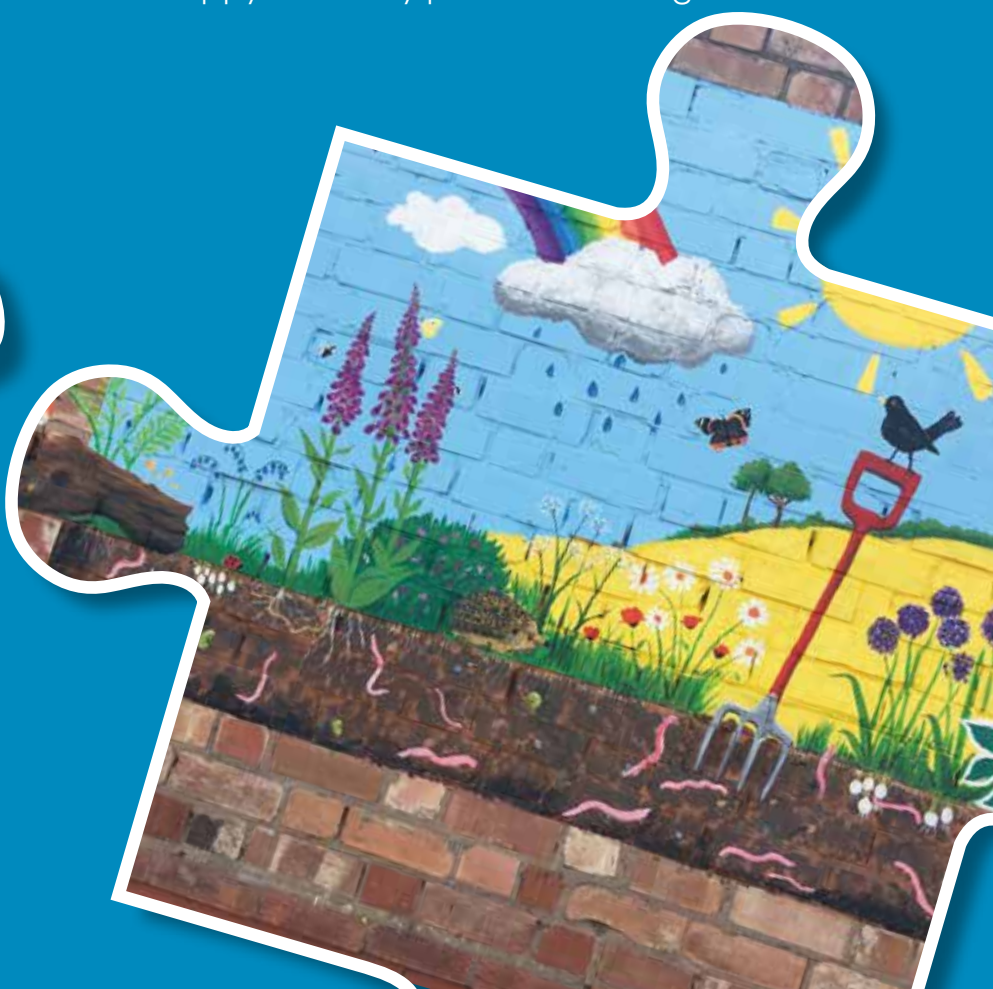


# Clapham Terrace Community Primary School and Nursery

---

## *A look into our school.*

Our emphasis is upon creating a sense of community within our school which is based on respecting, caring for and thinking about others as well as ourselves, and on taking responsibility for our own actions. This works, and our school is a happy and lively place of learning.







## Welcome to Clapham Terrace

At Clapham Terrace Community Primary School and Nursery we are proud of all our children. Our children are well motivated, they enjoy themselves and they take great pride in their school and its community.

Our aim is to provide the highest quality value added education for all our children to enable them to become well rounded, confident and self assured individuals who all have a place in our richly diverse school.

We value academic and personal success and all our children are encouraged to fulfil their potential and develop their diverse range of talents.

Our talented, caring staff have high expectations and work hard to build strong partnerships with parents and carers. We believe that this partnership is the key to ensuring all children flourish and achieve their capabilities. We believe in providing a vibrant and engaging curriculum, which excites children in their learning. We also value each child as an individual, actively celebrating diversity within school.

We hope that this Prospectus will give you an insight into the unique nature of Clapham Terrace Community Primary School and Nursery and the life that your child will enjoy at our school. However, it is always best to experience a busy school in action for yourself by visiting during the school day. I would be pleased to discuss your child's education with you and I would be delighted to show you around our school. Please contact the school office for an appointment.

*Julie Miles*

Julie Miles  
Head Teacher





## Our Grounds

We are extremely proud of our school and the distinctive Victorian buildings in which it is housed.

Our school is at the heart of its local community and we fully involve parents and local community members in the day to day life of the school.

Our school grounds are enriched with a wide range of stimulating opportunities for children of all ages to explore and play. We have a purpose-built climbing wall, a netball court, a cricket area, a stage for performing on and various areas for quiet reading and reflection. We also have a nature area, an outdoor classroom area and different climbing apparatus and trim trails for different ages. Our astro turf area proves hugely popular with all children.

Our large Early Years outdoor classroom has been area of recent investment; the children have numerous opportunities to take their learning outside on a daily basis, making use of the mud kitchen and the extra-large sand pit, as well as their very own gardening area in which they have built a bug hotel.

The bike track proves to be very popular, as does their extensive range of climbing equipment. The area hosts many quiet reflective spaces as well as opportunities for imaginative play and reading.







## Admissions

### Nursery aged children

Children are eligible for a nursery place the term after their third birthday. We have a 26-place Nursery which operates mornings from 9.00am – 12noon. Please contact the school office to enquire about place availability.

### Reception aged children

Children are eligible for a reception place in the school year following their fourth birthday. You will need to apply to the Local Authority (LA) for a place at our school in the January prior to the September in which your child will start school. Late applications are not considered until after the first round of offers are made and these are usually announced by the LA in April.

### Older primary aged children

Families can apply for their child to join our school at any age during the primary school year if a place is available. Applications must be made via the Local Authority Admissions Office.

Local Authority Admissions Office: [admissions@warwickshire.gov.uk](mailto:admissions@warwickshire.gov.uk) or 01926 414143.

Parents/carers have the right to appeal if a place is not offered and should contact the Authority on the number above.

## Our Aims

We believe that children's learning is at the core of everything we do. This is reflected strongly in our aims statement:

***At Clapham Terrace Community Primary School and Nursery we are committed to creating an outstanding, happy and secure learning environment in which the unique qualities of each child are recognised, respected and valued.***

Our school mascot **CARL** supports our aims. All the children's learning is linked closely to the values **CARL** represents.

During our daily assemblies we reflect these values. **CARL** sits proudly in our communal hall.

## "Clapham CARL"



Caring

- We expect all our children to **care** for themselves and each other.
- We strive to ensure that every child **achieves** their potential.
- We teach children to **respect** themselves, each other and the environment.
- **Learning** is at the heart of all we do.



Achieving



Respectful



Learners





Our children all share and enjoy a great sense of belonging in a safe environment. Our grounds are fenced and visitors enter school through reception. School policies are rigorous in order to ensure the protection of children's rights and safety. Visitors to our school frequently remark on the warm welcome they receive from both staff and pupils.

Our children grow in our safe and secure environment, and are supported to become positive, responsible and increasingly independent members of the school and the wider community.

### Pastoral Care

We make every effort to look after the children in our care and are concerned that they should feel happy. Children are encouraged to talk to adults if they are upset about anything. Parents and carers are also invited to talk to teachers if they have any concerns.

We follow the child protection procedures laid down by the Warwickshire Safeguarding Board. We always act in the interest of protecting children and any information in these circumstances is treated as strictly confidential.



### After school and before school care



Blast Off, our before school care is available from 8.00am - 8.45am. Rockets is our after school club – it's open from the end of the school day at 3.15pm through to 6.00pm.

The children have the opportunity to take part in a great range of activities which are carefully planned and thought through. The aim is to give some structure within an environment that feels slightly more relaxed to the approach of the highly structured school day. These activities include cooking, sewing, art and craft, sport and drama. The children have the opportunity to complete some of their homework. They are provided with a snack before their activities begin. They even have their very own pool and table tennis table, this has proved to be very popular as the children begin to relax and wind down at the end of their school day.

### Home School Association (HSA)



Many parents and carers like to help the school in all sorts of additional ways by being part of our Home School Association. The group is a dedicated team of parents/carers/ friends and staff, who work hard to organise activities which will raise additional funds for our school and also provide extra activities.

They organise Christmas and Summer Fairs, dances, quizzes, as well as events which don't raise money but are great fun.

Recent projects have been the development of our playground marking, our very own purpose-built kitchen, and our recently laid astro turf. The latest focus is the redevelopment of the nature area.

Throughout your child's time at Clapham Terrace you will get opportunities, both formal and informal, to talk with teachers about how your child is progressing. We feel that education is a partnership between families and school and take every opportunity to develop this positively for each child.

In each phase we recognise that the partnership with you as the child's primary carer is of great importance. We set up times to meet with you before your child starts at our school. We keep you informed of your child's progress as he/she grows through our school and we support you through the process of choosing secondary schools.

### Parents Evenings

Learning Review Meetings – each term you are invited to meet with your child's teacher to discuss their progress.

- **Autumn Term:** this is a meeting for you, your child and his or her teacher to share information and to consider your child's early progress in their new class.
- **Spring Term:** this is an opportunity to talk with your child's teacher, share examples of your child's work and find out how your child is continuing to progress and ways in which you can support them.
- **Summer Term:** a report is written which describes your child's progress through the year. You can, if you wish, make an appointment to talk this through with your child's teacher.



### Extra Curricular Activities

At Clapham Terrace we offer all children the opportunity to participate in a variety of After School Clubs.

#### Clubs on offer include:

- Netball
- Cross country
- Recorders
- Art club
- Board games
- Cooking
- Clapham News club
- Tag rugby
- Science
- DT Club
- Football
- Street Dance
- French
- Homework
- Multi-sports
- Singing/choir
- Cricket
- Debating
- Book club
- TT Rockstars



## Behaviour and Discipline

The school expects every member of the school community to behave in a considerate way towards others.

The school promotes and rewards good behaviour to support our ethos of kindness and cooperation. Children learn to respect one another as well as other members of the community.

We believe that encouraging and praising good behaviour is the most important foundation for their wellbeing and it promotes acceptable and positive behaviour. The children are praised and rewarded for good behaviour in a variety of ways:

- Teachers award house points for particularly good behaviour as well as for good work
- Certificates and stickers
- Lunchtime awards
- All kinds of achievements including academic, social and outside achievements are recognised in our weekly school Achievement Assembly every Friday at 2.45pm

We believe that some behaviour is unacceptable and that children need to understand this, learning how to control their own feelings and actions. Our Positive Behaviour and Discipline policy, written by the Staff and Governors outlines the rewards and methods we use to enhance all children's self-esteem. It defines unacceptable behaviour and how we manage it. The policy is available from the school office or on our website.

We also have an anti-bullying policy. We do not tolerate bullying in any form in our school and work hard to prevent bullying through our assembly programme, our PSHE curriculum and pupil voice groups. We deal with any issues quickly, clearly and sensitively and are aware of the needs of all concerned.





## Uniform

At Clapham Terrace we currently have an optional royal blue school uniform which meets the requirements of our school dress code. This is listed in our school Parent Handbook, and on our school website. If children choose not to wear uniform, our Governors request that they still come to school appropriately dressed. The school day is very varied, and children need to be comfortable and able to carry out activities. In addition we require that all children have a royal blue jumper, sweatshirt or cardigan to be worn when they are off-site on school trips and visits. The children are required to have a PE kit consisting of a white t-shirt and black shorts with pumps for indoors and trainers for outdoors.

## Attendance and Punctuality

Regular attendance at school is essential for the consistent development of a child's learning potential. Parents have a legal duty to ensure that children attend school.

At Clapham we place great importance on punctuality as it enables a good, positive start to the day.

The school day begins with Registration at 8.55am. Teachers and members of the School Leadership Team are available on the playground for 10 minutes daily from 8.45am. We request that all children are lined up ready to enter school when the bell rings at 8.55am. If your child has not arrived in class by this time then they will be recorded as late. Arrivals after 9.25am will be recorded as an unauthorised absence for that session of school.



### Pupil Voice

We believe the children should have a say in the continual development of their school. Many of our children are elected for various leadership roles and represent the views of their peers.

### JLT

Two children from each class are elected by their class to represent them on the Junior Leadership Team. They meet with the Deputy Head teacher to discuss all sorts of things and recently worked on establishing House Teams for the school.

The Junior Leadership Team also helped with writing a policy on Anti-Bullying, and they are a great asset to the decision making processes of our school.

### Ambassadors

Each class has two ambassadors; these children articulate clearly their class' current learning to all visitors and guests to our school. They make visitors feel welcome and ensure all community members can share the children's learning experiences.

### Learning Detectives

Our learning detectives represent their classes views about both learning and pastoral issues. They talk to Governors, visitors and the School Leadership Team and support the development of the school.

### Eco Activists

This group of children support the development of our outdoor learning curriculum and work alongside our Science co-ordinator.

### COST: Clapham's Online Safety Team

This team of children represent the views of their peers and ensure we are all fully aware of how to stay safe online .

### Sports Leaders

Our sports leaders work with our PE leader to continually develop events across our school house teams to ensure children at all levels are exposed to a great range of sports and activities.





## Charter

At Clapham, we firmly believe that our children's thirst for creativity comes from the importance we place on the development of their social, moral and cultural learning. One way we achieve this is through our Clapham Charter. It is a list of 50 things the children aspire to achieve throughout their time at Clapham.

## Home learning

We set homework to provide opportunities for parents, carers and children to compliment and build on experiences in school and enable parents and carers to become more involved in your child's learning.

Homework is set relevant to the children's need, their age and ability. In Early Years, homework usually involves reading together and a fortnightly task. Key Stage 1 spelling and maths skills are developed in partnership with parents and carers.

In both Key Stages, homework consists of spelling, reading, times tables and basic maths skills. A Home learning creative task is set half termly. The children are given a more open-ended style task linked to the topic or areas of curriculum they are currently covering. They have a few weeks to complete the task, presenting it in any way they wish.



### Early Years Foundation Stage

The Nursery and Reception classes together form our Early Years Foundation Stage. We teach all the subjects of the Early Years Foundation Stage and National Curriculum, so that children's knowledge and understanding of the world they live in grows and develops. We also encourage them to grow and develop into independent young people who are keen to learn, who care about themselves and others, and want to contribute positively to the world they live in.

The Nursery and Reception classes are based in a suite of rooms, which include space for play, small and large group activities, large hall space, creative areas and an outdoor classroom.

The timetable is carefully thought out so that the learning needs of young children are fully met.

### The Foundation Stage Curriculum

During the Reception Year the children will be learning through play and practical activities. This will give purpose to their learning and will enable them to develop literacy, numeracy, personal and social and a wide range of other skills through activities that are relevant to them. The children will engage in a range of different activities every day related to their topic. Some of these activities will take place in large groups, some in smaller groups and some individually. There will be a mix of adult led and child initiated activities.

The curriculum will be planned to take into account each child's skills and interests and the outdoor and indoor environments are given equal status. Children's learning will be constantly monitored through observational assessment and their future learning needs will be met through careful planning and differentiation of activities.

### Open Sessions

Parents and carers of children in Early Years are invited into school regularly to watch and engage in the children's learning in action. Parents are most welcome to become involved in school life and we are always looking for volunteers. Please feel free to come and talk to us if you would like to become a volunteer.

Children are assessed on entry to the school and progress in all areas of development is tracked carefully throughout the Foundation Stage. At the end of your child's Reception year they will be assessed against the Foundation Stage Profile, this will enable staff to plan for a smooth transition into Year 1.

### The curriculum in Key Stage 1: Ages 5-7 (Years 1-2)

The developments children make in the Foundation Stage are continued at Key Stage 1 (and indeed throughout our school) as they grow older, become more able to grasp more complicated learning and are more independent.

At Key Stage 1, a careful balance is established to ensure children continually build on the basic skills and develop the necessary skills young children need to be independent, social people.

Children work in two classrooms (Year 1 and Year 2). As well as Literacy and Numeracy, other core and foundation subjects are introduced as children grow in their capacity to learn. Basic skills remain a considerable focus of this stage.

The children are assessed continuously throughout each term. This not only allows us to ensure that each child is receiving the learning and teaching they are entitled to, but also helps us to review and address each child's strengths and areas for development. At the end of Year 2 children are formally assessed as to the 'level' which shows their progress and attainment in Literacy and Numeracy.



## Curriculum

### Key Stage 2: Ages 7-11 (Years 3-6)

The four classes are taught both the core and foundation subjects in ways that match the children's growing maturity. Children also take on more and more responsibility as they grow older and become more independent.

#### Core Subjects:

- Literacy
- Numeracy
- Science
- Religious Education
- Information and Communication Technology (Computing)
- Foundation Subjects
- Art and DT
- Music
- MFL
- History
- Geography
- Design and Technology
- Physical Education
- PSHE (Personal, Social and Health Education)

Children continue to be assessed each term throughout each year and they undertake formal SATs assessments in the Summer Term of Year 6. Ongoing assessments assist us in monitoring each child's progress and enable us to support their learning effectively.

Our intention is not only to give each child every opportunity to learn and grow, but also to prepare and assist them in their passage from our school to their secondary school.







“Some pupils have made rapid progress in a short space of time. This is because leaders take a very personalised approach when needed.”

*Ofsted November 2022*



“The school’s work to develop pupils’ understanding of what it means to be a responsible citizen is exemplary.”

*Ofsted November 2022*







“An overwhelming majority of parents would recommend the school to others. They are highly positive about leaders and staff. They value the close working partnership between home and school.”

*Ofsted November 2022*



“Reading is central to the curriculum. Staff have the expert knowledge they need to teach phonics and early reading well.”

*Ofsted November 2022*







"Pupils and their parents say they are lucky to be a part of Clapham Terrace, which is a thriving community in both name and nature."

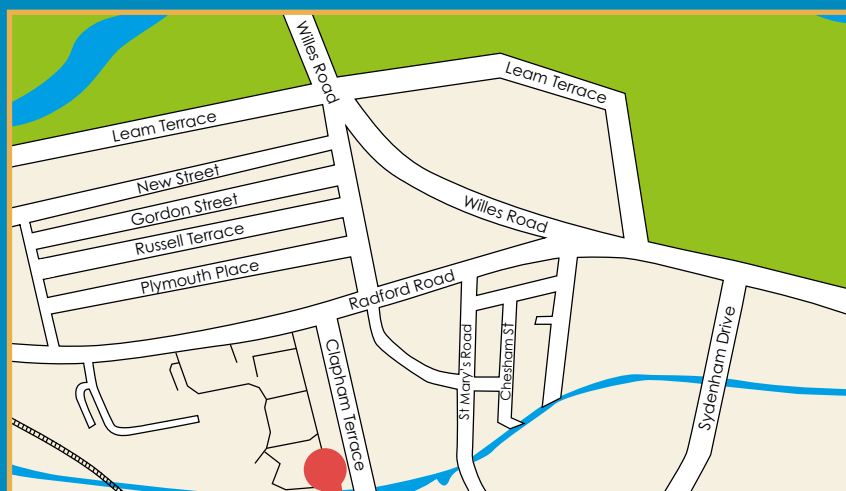
*Ofsted November 2022*



“Pupils play and work well together. Behaviour is excellent in lessons, in assemblies, and out on the playground.”

*Ofsted November 2022*





### **Clapham Terrace Community Primary School & Nursery**

Clapham Terrace, Leamington Spa, Warwickshire CV31 1HZ

Tel: 01926 423404 Email: [admin2312@welearn365.com](mailto:admin2312@welearn365.com)

[www.claphamterrace.info](http://www.claphamterrace.info)