



Complaints Policy

Date of Policy: May 2015

Policy Review date: May 2018

Signed:

Headteacher:

Signed:

Chair of Governors:

Equality Statement

In our school, we are committed to eliminate discrimination and advance equality of opportunity for all those with 'protected characteristics' under the Equality Act 2010, in relation to age, disability, ethnicity, gender, gender reassignment, maternity and pregnancy, religion and belief, sexual identity and marriage and civil partnership status. We will endeavour to foster good relations between all.

(Our full Equality Statement can be found on the school website)

The Governing Body of Clapham Terrace Community Primary School and Nursery have adopted the following Warwickshire County Council policy to deal with formal-complaints from members of the school community or general public.

Dealing with concerns at the earliest opportunity

If parents, pupils or members of the public have concerns they should:

1. Discuss their concerns with the member of staff most directly involved and, if not satisfied;
2. Discuss their concerns with a senior member of staff and, if still not satisfied;
3. Discuss their concerns with the Headteacher.

This third step is **Stage 1 of the formal process.**

We expect the majority of concerns will be resolved at steps 1 or 2 above (and not recorded as a formal complaint). However if the concern proceeds to step 3 above, the following formal procedure will be followed

At each stage in the procedure, the school will endeavour to seek ways in which a concern or complaint can be resolved. It might be sufficient to acknowledge that the concern or complaint is valid in whole or in part. In addition, it may be appropriate to offer one or more of the following:

- an appropriate apology;
- an explanation;
- an admission that the situation could have been handled differently or better;
- an assurance that the event complained of will not recur;
- an explanation of the steps that have been taken to ensure that it will not happen again;
- a commitment to review school policies in light of the complaint.

The school will encourage complainants to state what actions they feel might resolve the problem at any stage. An admission that the school could have handled the situation better is not the same as an admission of negligence. Equally, an effective procedure will identify areas of agreement between the parties. The school will always seek to clarify any misunderstandings that might have occurred as this can create a positive atmosphere in which to discuss any outstanding issues.

Only where all these avenues have been tried and found unsatisfactory should the complainant take a complaint to the Chair of Governors or Clerk to the Governing Body.

Principles informing our complaints procedure

This procedure is designed to:

- be well publicised and easily accessible
- be simple to understand and use
- be impartial
- be non-adversarial
- allow swift handling with established time limits for action and keeping people informed of the progress
- allow a mediation process if agreed by the complainant
- allow for a hearing of a panel of Governors, where appropriate
- respect people's desire for confidentiality, wherever possible
- address all points of issue, provide an effective response and appropriate redress where necessary
- provide information to the school's Senior Leadership Team so that services can be improved.
- ensure a full and fair investigation by an independent person where necessary

Making a Complaint to the Governing Body - Stage 2

Where informal attempts have been unsuccessful in resolving a complaint, and Stage 1 of the formal process (discussion with the headteacher) have been unsuccessful, the complainant should write to the Chair of Governors or Clerk to the Governing Body at the school address. The envelope should be marked 'FOR IMMEDIATE ACTION' 'PRIVATE AND CONFIDENTIAL' and staff in the school office will ensure that the letter is forwarded without delay.

The complainant will be asked to complete a complaint form (Annex 1) if they have not already done so. The Chair of Governors or Clerk will offer to help an individual to complete the form if appropriate

On receipt of the complaint form the Chair of Governors (or other governor) will:

- clarify the nature of the complaint and what remains unresolved;
- meet with the complainant or contact them (if unsure or further information is necessary);
- clarify what the complainant feels would put things right.

At this point the Chair of Governors will decide whether the complaint should go straight to the governors' complaints panel or whether a mediation stage should be offered. Mediation can only proceed if the complainant and the Headteacher are willing for it to be tried. If mediation is not successful, the complaint will be considered by the governors' complaints panel.

Mediation

Mediation can be a good way to resolve a complaint because:

- It gives both complainant and Headteacher another opportunity to hear each other's points of view (with a third party facilitating)
- It gives the third party an opportunity to help Headteacher and complainant identify and build on areas of agreement
- It gives Headteacher and complainant a structure within which they can resolve remaining differences.
- If both complainant and Headteacher emerge from the mediation satisfied, that is the best foundation for a continuing positive relationship between them.

- Even if the complaint continues to a governors' panel, the issues to be considered are likely to be much clearer following the mediation.

Mediation may elicit one or more of the responses listed below from either party:

- an acknowledgment that the complaint is valid in whole or in part.
- an appropriate apology;
- an explanation;
- an admission that the situation could have been handled differently or better;
- an assurance that the event complained of will not recur;
- an explanation of the steps that have been taken to ensure that it will not happen again;
- an acceptance that the complaint needs go no further
- a commitment to review school policies in light of the complaint.

(See Appendix for Mediation facilitator options)

Governors' Complaints Panel

Where the complainant is still not satisfied that their complaint has been dealt with fully and properly, they may choose to take it to a panel of Governors

Establishing a Complaints Panel

The Governing Body will agree the arrangements for convening a Complaints Panel at the first meeting of the governing body each year.

The decision about the membership of a particular panel will depend on factors such as availability, whether any governors have prior knowledge or have a conflict of interest etc. and the decision about the composition of a panel of three, when needed, will be made by the Chair of Governors.

When the Clerk of Governors receives a copy of the complaint form he/she will inform the governing body that a complaint has been received and that it has been passed to the panel to deal with. **No further information about the complaint will be shared with other governors.**

Governors sitting on a complaints panel will bear in mind that:

- a) It is important that the hearing is independent and impartial and that it is seen to be so. No governor will sit on the panel if they have had a prior involvement in the complaint or in the circumstances surrounding it.
- b) The aim of the hearing, which needs to be held in private, will always be to resolve the complaint and achieve reconciliation between the school and the complainant
- c) The panel chair will ensure that the proceedings are as welcoming as possible, and that, for example, the layout of the room is comfortable for those attending and not intimidating or adversarial.

The Chair of the Panel will be nominated by the Chair of Governors and is responsible for ensuring that both complainant and Headteacher are given a fair hearing and that the panel arrives at its judgment without fear or favour.

Remit of the panel

The complaints panel can:

- dismiss the complaint in whole or in part;
- uphold the complaint in whole or in part;
- decide on the appropriate action to be taken to resolve the complaint
- recommend changes to the school's systems or procedures to ensure problems of a similar nature do not recur.

It may:

- Consider and, if appropriate, criticise the way in which an operational decision was communicated — **but cannot overturn the decision itself**
- Consider the thoroughness with which the Headteacher investigated a complaint about a member of staff — **but cannot expect the Headteacher to provide details about confidential discussions with that staff member**
- Consider the manner in which a complaint about any decision was addressed
- Ask for the decision to be reviewed — **but cannot expect the Headteacher to change the decision**
- Consider and, if appropriate, identify limitations in a policy or in procedures —**but cannot make changes to the policy in question.** (It can, however, recommend that the policy be reviewed by the governing body to ensure that problems of a similar nature do not recur, and individual panel members can subsequently play their part in improving the policy)
- Consider whether it should recommend that the governing body offer appropriate redress

Format of a Panel Hearing

1. Complainant and Headteacher will enter the room where the hearing is taking place together
2. The chair will introduce the panel members and the clerk and outline the process
3. The complainant is invited to explain the complaint
4. The Headteacher may question the complainant
5. The panel will question the complainant
6. The Headteacher is then invited to explain the school's actions
7. The complainant may question the Headteacher
8. The panel will question the Headteacher
9. The complainant is then invited to sum up their complaint
10. The Headteacher is then invited to sum up the school's actions and response to the complaint
11. The chair explains that both parties will hear from the panel within five working days
12. Both parties leave together while the panel decides on the issues
13. The clerk will remain with the panel to clarify any issues

Notes

The hearing will be made as unthreatening as possible to all parties.

The panel may ask questions at any point. Panel members will find ways to ask probing questions while maintaining impartiality.

The Headteacher will have no contact with members of the governors' complaints panel except when the complainant is present to preserve the principle of neutrality. This means that the Headteacher and complainant enter and leave the room where the hearing is held together.

The Chair of the panel will discourage the introduction of fresh documentary evidence at the hearing — there will be every encouragement to produce the evidence in advance so that both sides have time to study it. However, if new and relevant evidence is accepted by the Chair, the Chair will adjourn the hearing for a few minutes to allow everyone to read the document. Both parties must leave the hearing room during the adjournment.

Some notes on exceptional circumstances

For the sake of clarity, the description above does not cover exceptional circumstances which might include:

The Chair of Governors being unable to find three governors who have no prior knowledge of the case

If a case has become a major talking point around the community, the chair can nominate three governors with minimal prior knowledge

If there are still insufficient governors able to sit on a panel, the governing body in consultation with the Local Authority will put in place an alternative fair process.

In such circumstances, the Chair of Governors will seek advice from WCC Governor Services.

A complaint to the governors' complaints panel will never be against a junior member of staff. It may be against the way the Headteacher handled a complaint against a junior member of staff, and, in some circumstances another senior leader may appropriately stand in for the Headteacher. That would need to be considered very carefully but if agreed the senior manager would be 'the Headteacher' for the purpose of the panel.

There may be exceptional circumstances in which the complaint is against the Chair of Governors — e.g. for refusing to deal with a complaint. In those circumstances the procedure above would be adapted and every reference to 'Headteacher' would be read as 'Chair of Governors'.

Writing the decision letter

The clerk will ensure that s/he has clear wording stating the panel decision about each of the issues that the panel considered before the panel is allowed to finish. The clerk will use that wording to draft the decision letter. This will be sent to all members of the panel for checking. Once approved by all three panel members, it will be sent to the complainant with a copy to the Headteacher.

The letter will clearly express how seriously the panel considered the complaint.

The clerk will ensure that the letter adheres to the facts and is impartial.

The clerk will ensure that the letter reaches the complainant and the Headteacher within five working days.

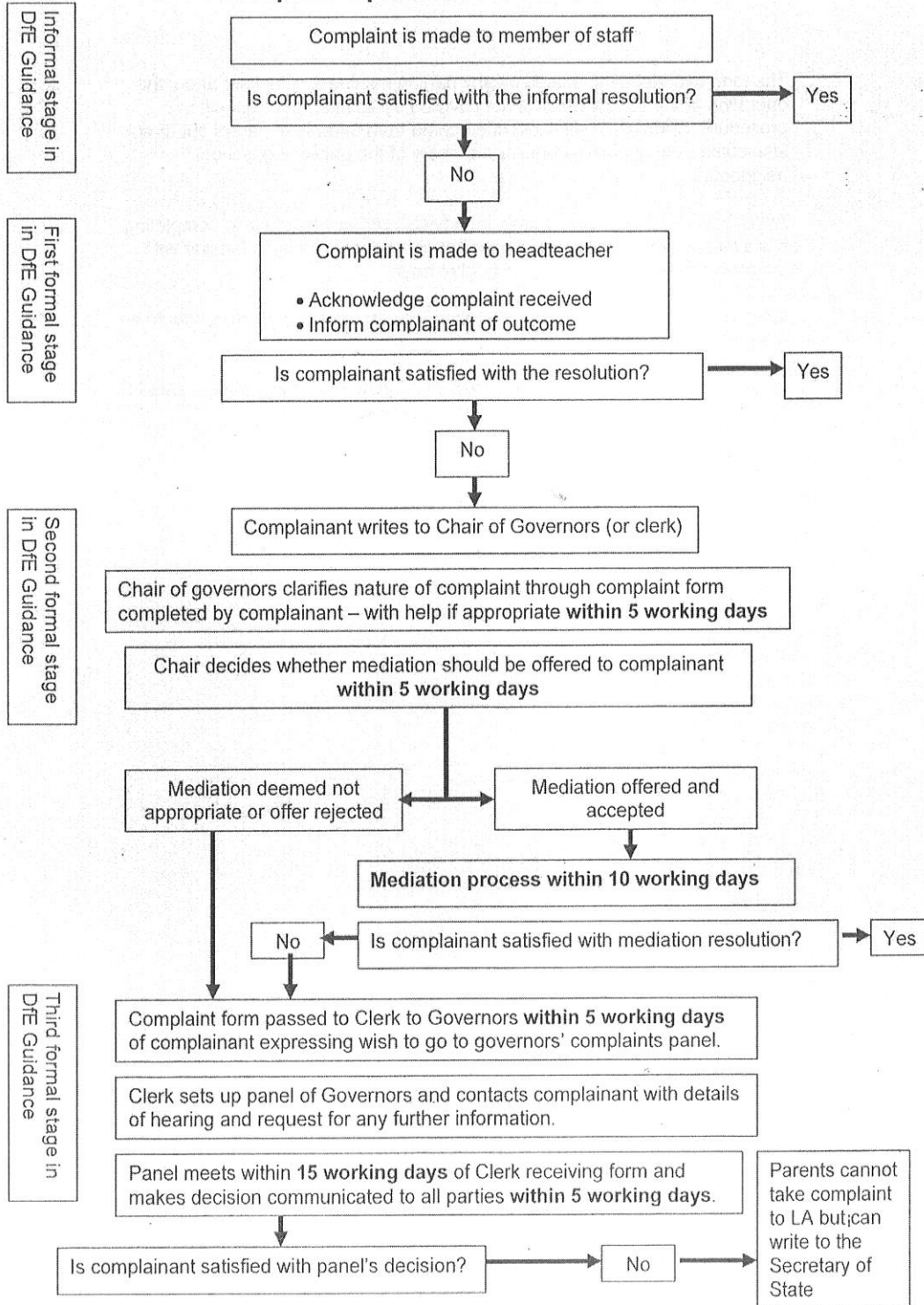
Monitoring Complaints

As well as addressing an individual's complaint, the process of listening to and resolving complaints should contribute to school improvement. When individual complaints are heard, schools may identify issues that need to be addressed. The monitoring and review of complaints by the school and Governing Body can be useful in evaluating the school's

performance. Any discussion of complaints by the Governing Body or others in the school community should not name or identify individuals.

The flowchart overleaf summarises the complaints process.

Complaints process from start to finish



Appendix 1

Model Complaint Form

Notes

The form overleaf must be used by any person making a complaint about the operation of the school which is not covered by an alternative specific procedure. Complaints will most often come from parents or carers but may also come from pupils/students or members of the public, e.g. school neighbours.

Anyone wishing to use this form should be advised verbally that help in completing it is available from the school. A member of school staff who is familiar with the process should be nominated to give help.

Clapham Terrace Community Primary School and Nursery

Complaint Form

Please complete and return to The Chair of Governors or the Clerk to the Governing Body, who will acknowledge receipt and explain what action will be taken.

Your name:

.....
.....

Address:

.....
.....
.....
.....

Postcode:

Daytime telephone number:

.....

Evening telephone number:

.....

If applicable, name of child(ren) at school:

Please give details of your complaint:

What action, if any, have you already taken to try and resolve your complaint? (Who did you speak to and what was the response?)

Your relationship to the school, e.g. parent, carer, neighbour, member of public:

What actions do you feel might resolve the problem at this stage?

Are you attaching any paperwork? If so, please give details.

Signature:

Date:

Official Use:

Date of acknowledgement sent:

By Whom:.....

Complaint referred to:

Date:

Appendix 2

Sharing your concerns about your child's education - A Parents' Guide

Clapham Terrace Community Primary School and Nursery recognises that at times things can go wrong. This guidance will help you understand how to resolve concerns you may have about your child's education.

The school has procedures for dealing with concerns or complaints and we value any feedback about our services, including compliments and suggestions. If you are concerned about any aspect of your child's education, you should contact your child's class teacher or the Headteacher, at the school.

The school's Governing Body has overall responsibility for the school and for ensuring the well-being of pupils and that all pupils receive an appropriate and high standard of education.

The Headteacher is responsible for making decisions on a daily basis about the school's internal management and organisation. So you should contact the school if you are concerned about an issue such as:

- your child's academic progress
- special education needs provision
- your child's welfare
- bullying
- something that has happened in school

How do I complain to the school?

First, we hope you will speak to the relevant member of staff as soon as you have a concern. This will usually be the class teacher.

This informal approach is nearly always the quickest and most effective way of resolving your concerns.

If you feel that your concern has not been resolved, then it is important to speak to or write to the Headteacher who will look into your concern.

If you are unhappy with the Headteacher's response you should write with your complaint to the Chair of Governors/Clerk to the Governing Body at the school address. Mark your envelope 'FOR IMMEDIATE ATTENTION' – Private and Confidential.

This is how your complaint will be handled

Within 5 working days the Chair of Governors will clarify the nature of your complaint by asking you to complete a complaint form and will offer help in completing the form, if required.

Within 5 working days of receiving the form the Chair will decide whether mediation should be offered to help you and the Headteacher explore possible resolution.

If mediation is agreed, the chair of governors will endeavour to set up the meeting **within 10 working days**. If that timescale is not possible you will be told the reason.

If mediation is not deemed appropriate or if it is not successful, the Chair of Governors or Clerk will set up a panel of governors to meet **within 15 working days** of receipt of complaint form to consider your complaint. The clerk will provide details of the hearing and will request any further information you may wish to provide.

The complaints panel will consist of three governors who (as far as possible) will have no prior knowledge of the events being complained about. The panel will be supported by a clerk who will take notes during the hearing and will stay with the panel while they make their decision in case governors need to be reminded about responses to a particular question. The panel will hear the complaint impartially and make their decision based on the facts and the evidence they have been provided with.

Five working days before the hearing the clerk will send to you, the complainant, the Headteacher and the three panel members, copies of all papers submitted by both sides so that there is sufficient time to read the evidence before the hearing (which must be submitted to the clerk seven days before the hearing).

At the hearing:

1. You and the Headteacher will be invited into the room where the panel is being held at the same time.
2. After introductions, you, the complainant will be invited to explain your complaint
3. The Headteacher may question you
4. The panel will question you
5. The Headteacher will be invited to explain the school's actions
6. You, the complainant may question the Headteacher
7. The panel will question the Headteacher
8. The panel may ask questions at any point.
9. You, the complainant will then be invited to sum up your complaint.
10. The Headteacher will then be invited to sum up the school's actions and response to the complaint.
11. The chair will explain that you and the Headteacher will hear from the panel **within five working days.**
12. Both you and the Headteacher will leave together while the panel decides on the issues.
13. The clerk will remain with the panel.

Can I take my complaint further?

You cannot take your complaint to the Local Authority. The Local Authority cannot investigate school matters on a parent's behalf nor can it review how the school has dealt with your complaint.

However, if you feel that the school has acted unreasonably or not followed the correct procedures, you can write to the Secretary of State for Education
<http://www.education.gov.uk/heip/contactus/df>

Appendix 3

Mediation

The benefits of mediation

Mediation can be a good way to resolve a complaint because:

- It gives both complainant and Headteacher another opportunity to hear each other's points of view (with a third party facilitating)
- It gives the third party an opportunity to help the Headteacher and complainant explore and build on areas of agreement
- It gives Headteacher and complainant a structure within which they can resolve remaining differences.
- If both complainant and Headteacher emerge from the mediation satisfied, that is the best foundation for a continuing positive relationship between them.
- Even if the complaint continues to a governors' panel, the issues to be considered should be much clearer.

Mediation may elicit one or more of the responses listed below from either party:

- an acknowledgment that the complaint is valid in whole or in part.
- an apology;
- an explanation;
- an admission that the situation could have been handled differently or better;
- an assurance that the event complained of will not recur;
- an explanation of the steps that have been taken to ensure that it will not happen again;
- a commitment to review school policies in light of the complaint.

Recourse to mediation must be with the agreement of both parties and is intended to help arrive at a mutually agreeable solution — it is not possible to impose this on either party. Nor does it prevent a complainant having recourse to formal appeals procedures as detailed.

In-house mediation

Many chairs of governors and other governors already have the skills — or can acquire the skills — to conduct a mediation process between their Headteacher and a complainant. The skills and attributes include:

- ability to listen impartially to both sides
- ability to control a dialogue so that both sides listen to each other
- ability to summarise the arguments and focus the dialogue
- ability to identify areas of agreement that might form a basis for resolving one or more of the issues relating to the complaint
- understanding that solutions cannot be imposed and that both parties need to be satisfied with whatever is resolved.
- understanding that mediation does not always work and there is a further step available to complainants.

If the governing body requires outside help

Governor Services offers a mediation service where a trained clerk, governor or adviser acts as mediator.

The mediation 'package' consists of the following elements:

- familiarisation with the background and nature of the complaint (including the reading of supporting documentation and interviews with the complainant, staff and governors as appropriate. These may be 'face to face' or by telephone);
- a mediation meeting between the complainant and a representative of the school;
- a written summary of the mediation meeting including, where appropriate, recommendations in relation to school policies, procedures and actions.

Mediation will be undertaken by a trained clerk, governor or adviser not directly linked to the school in order to ensure complete impartiality.